

# Building More Flexible & Efficient Interiors

A New Standard for Commercial Buildings

Presented by Paula Ziegenbein, LC  
Application Marketing Manager

OSRAM SYLVANIA

at LIGHTFAIR May 2009



# What Is The EMerge Alliance?

An open industry association...

- Formed by leaders in architecture, engineering, construction, energy, technology and building products
- Promoting the rapid adoption of safe, low voltage DC power distribution and use in commercial interiors
- Professionally managed and based in California
- Accepting new members

## The EMerge Alliance

The Alliance is an open, not-for-profit, industry consortium.

# What is EMerge about?

A DC-powered platform for commercial interiors.

- Safe, low voltage DC power distributed within a building
- Enabling plug-and-play device flexibility and increased energy savings
- Optional direct DC-power integration with alternative energy sources
- A new open standard for a wide variety of commercial buildings

## The EMerge Alliance

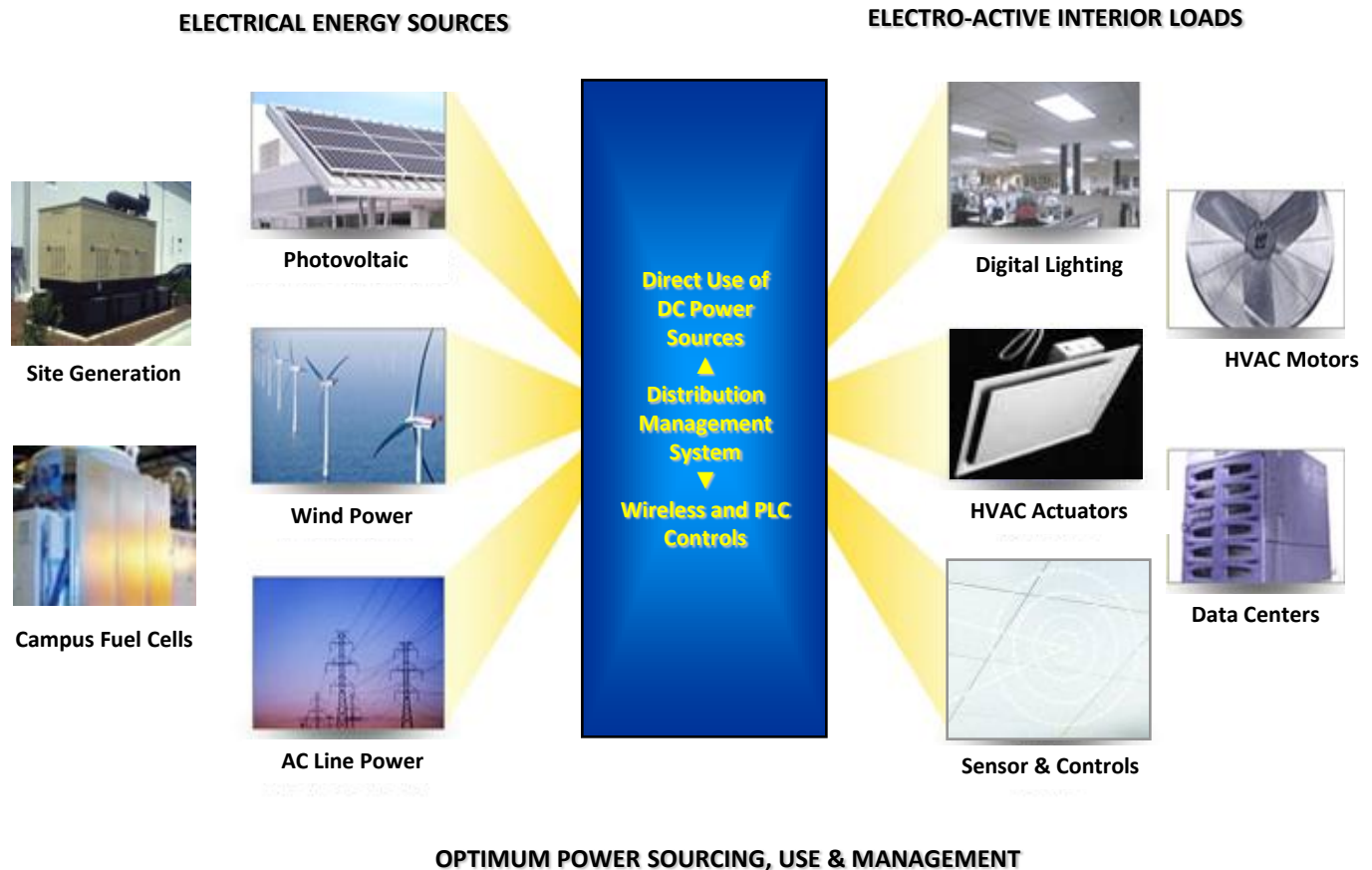
The Alliance is a not-for-profit, professionally managed industry consortium.

# Where Is EMerge Focused?

A hybrid power application for commercial interiors.

## The EMerge Alliance

Focused on creating a hybrid power topology that meets the needs of buildings today and tomorrow.



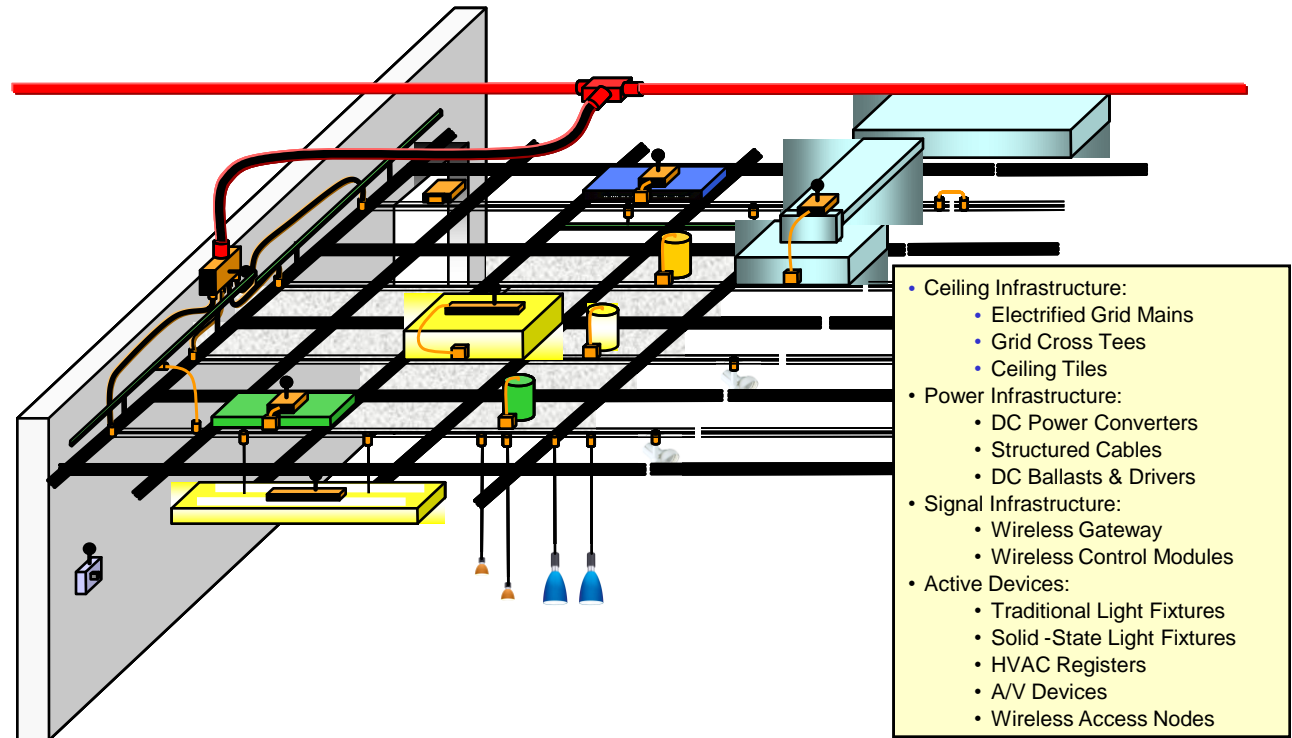


## The EMerge Alliance

Standardizing a low voltage DC layer that is code-compliant and versatile for plug and play functionality with a wide range of DC-based devices.

# Safe, Efficient, Plug & Play

Put it all together in a simple, organized way.



# Flexibility

Unprecedented design and space flexibility.

- Allow direct access to safe power wherever it's needed
- Make it easier to install light fixtures, sensors, actuators and other devices
- Plug and play mobility and simplicity
- Enable easy repurposing or reconfigurations without rewiring
- Help future-proof a space for new technologies like LEDs

Do more with  
unimaginable  
ease

# Sustainability

Meet needs for today and tomorrow.

- Simpler devices with less materials (no AC-DC conversions)
- Enable re-use of system devices
- Reduce energy consumption through advanced controls and solid-state lighting
- Facilitate the direct connection to alternative energy sources like wind, solar and fuel cells
- Improve energy efficiency through integrated load and source management

Promote green  
construction and  
facility  
management

# Savings

Reap rewards for decades to come.

- Lower reconfiguration costs with plug and play devices to get back in operation sooner
- Allow facility teams to quickly and safely move or re-install devices
- Reduce technology upgrade costs with this future-ready DC platform
- Optimize various types of electrical energy use for better control, metering and demand reduction

Flexibility +  
Sustainability =  
Savings



# Current Members

Leaders in power, lighting, sensors, controls, and interior infrastructure.





# Current Members

Leaders in power, lighting, sensors, controls, and interior infrastructure.



Founding,  
Participating,  
General &  
Supporting  
Members

# Current EMerge Activities

A DC-powered platform for commercial interiors.

- EMerge Standard released for comment
- Advisory Council formed
- Member recruitment
- Demonstration sites
- Conference presentations
- Launching word of mouth campaign

## The EMerge Alliance

The Alliance is a not-for-profit, professionally managed industry consortium.

# See For Yourself....

An EMerge demonstration in our LIGHTFAIR booth



OSRAM  
SYLVANIA is a  
founding  
member of the  
EMerge Alliance

- A dimmable LED downlight fixture using a SYLVANIA DLM 1100 module
- A recessed downlight with SYLVANIA DULUX® T/E compact fluorescent lamp and QUICKTRONIC® 24Vdc input electronic ballast
- A dimmable LED based cove light fixture using SYLVANIA HF<sup>2</sup>Narrow Stick modules
- Dimmable LED based track mounted fixtures with SYLVANIA HF<sup>2</sup>Flood modules
- All fixtures controlled by SYLVANIA elogic® wireless dimmers, control switches and wireless, batteryless wallbox controls